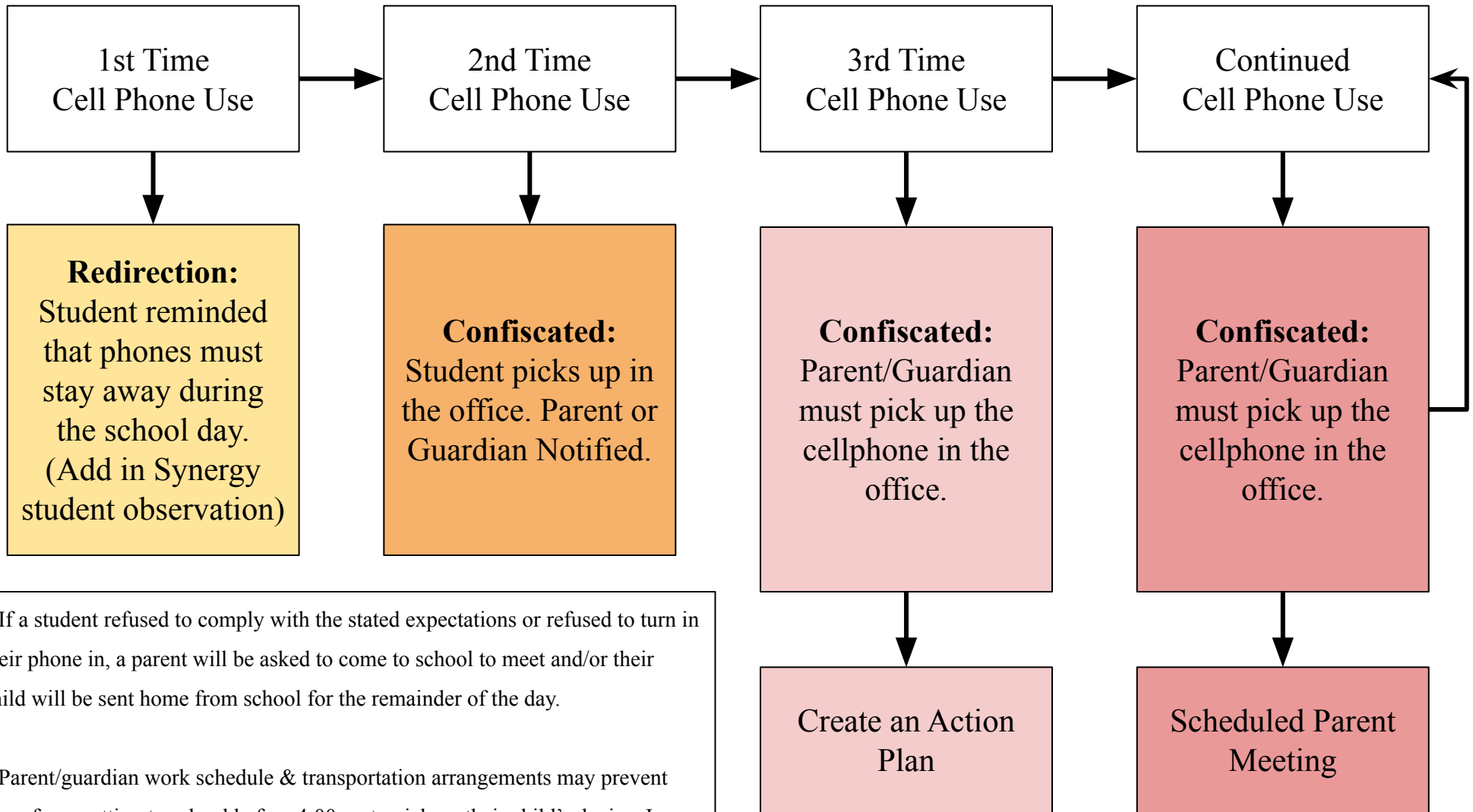


Broughal Cell Phone & Electronic Devices Procedure



* If a student refused to comply with the stated expectations or refused to turn in their phone in, a parent will be asked to come to school to meet and/or their child will be sent home from school for the remainder of the day.

* Parent/guardian work schedule & transportation arrangements may prevent them from getting to school before 4:00pm to pick up their child's device. In that situation, the cell phone/device will be stored in a secure location at school until the parent/guardian are able to come to school. It will not be released back to the student after the second occurrence.